

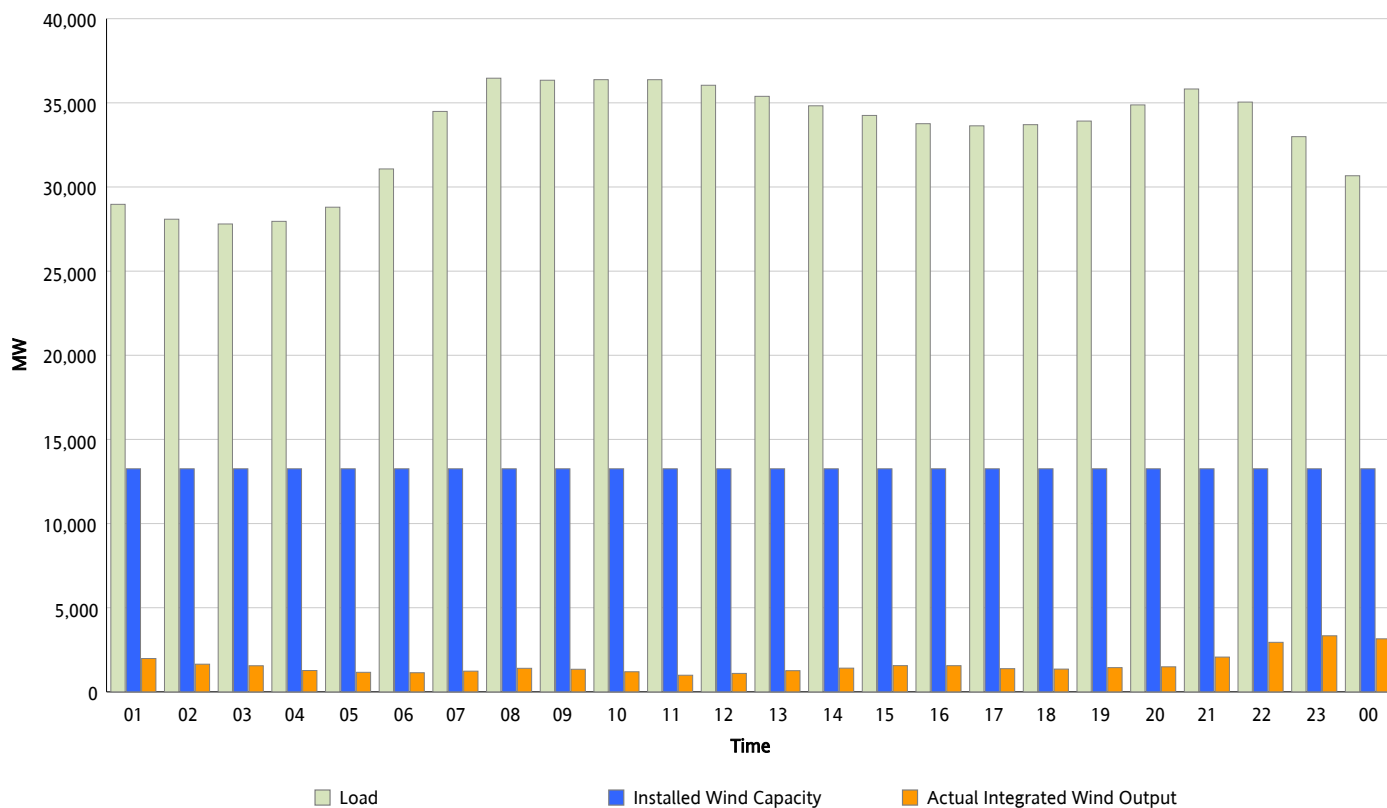


## ERCOT Grid Operations

### Wind Integration Report : 03/11/2015

|                      |           |
|----------------------|-----------|
| Peak Load            | 36,463 MW |
| Load Peak Hour (HE)  | 08        |
| Wind Over Peak       | 1,400 MW  |
| Wind Record 02/19/15 | 11,154 MW |
| Max Wind Value*      | 3,402 MW  |
| Wind Peak Time       | 22:39     |
| Wind Integration %   | 10.42 %   |

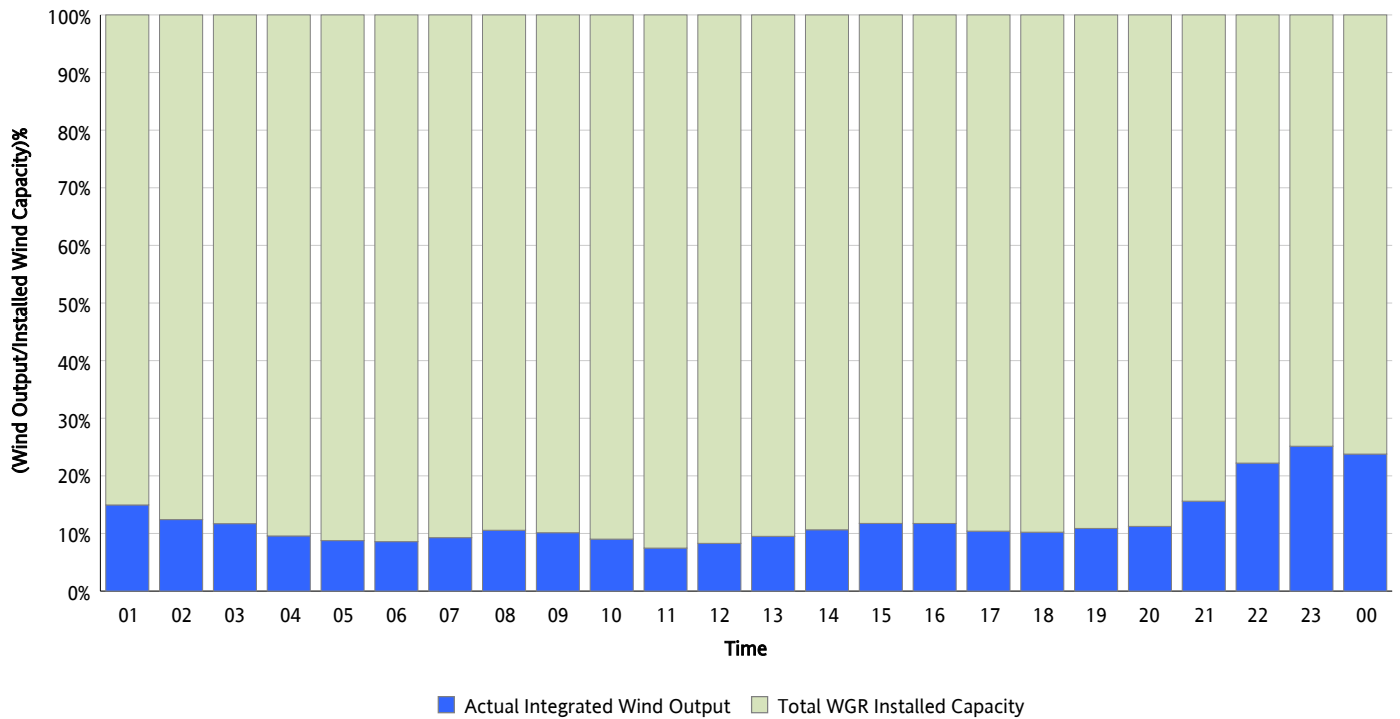
**Hourly Average Actual Load vs. Actual Wind Output**  
03/11/2015



*\* Wind Record and Wind Max represent instantaneous values and the rest of the values are integrated over the hour.  
Capacity numbers used in the graphs are based on the expected commercial operation date of each Wind Generation Resource.*

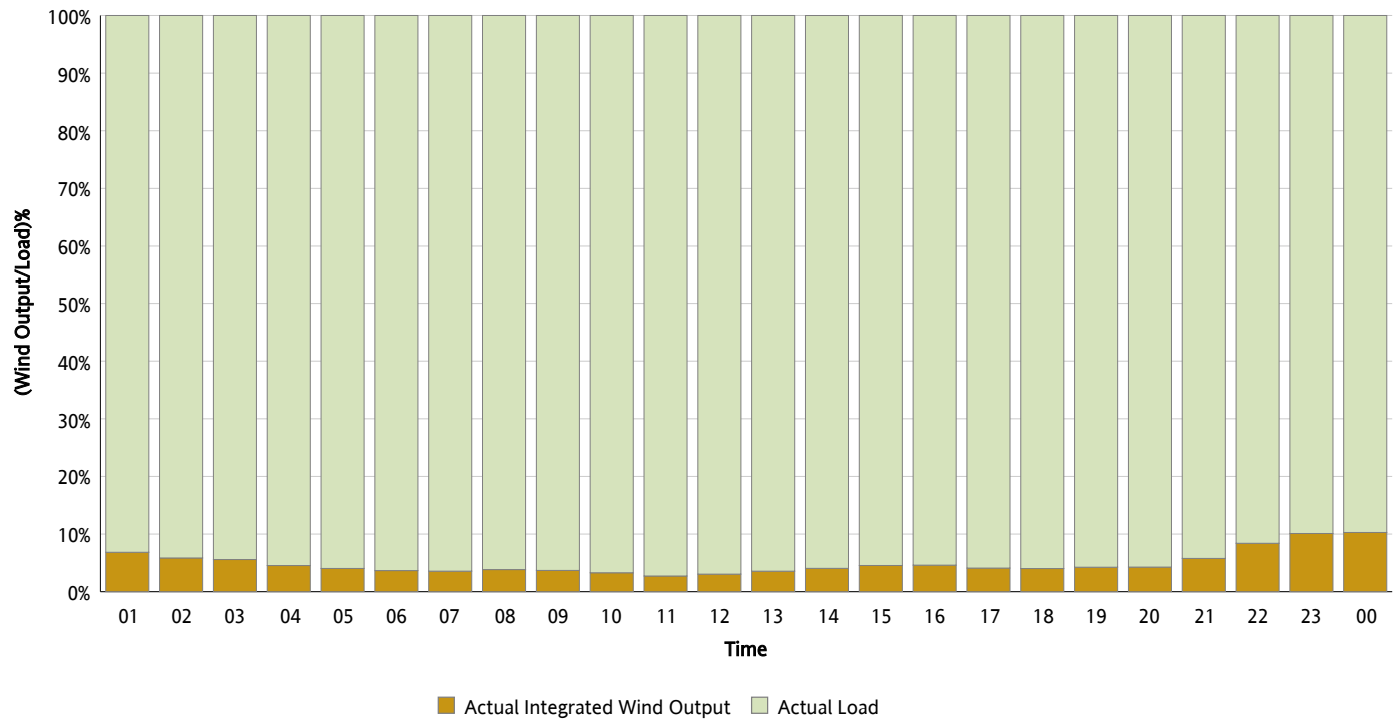
## Actual Wind Output as a Percentage of the Total Installed Wind Capacity

03/11/2015



## Actual Wind Output as a Percentage of the ERCOT Load

03/11/2015



## ERCOT Load vs. Actual Wind Output

03/04/2015 - 03/11/2015

